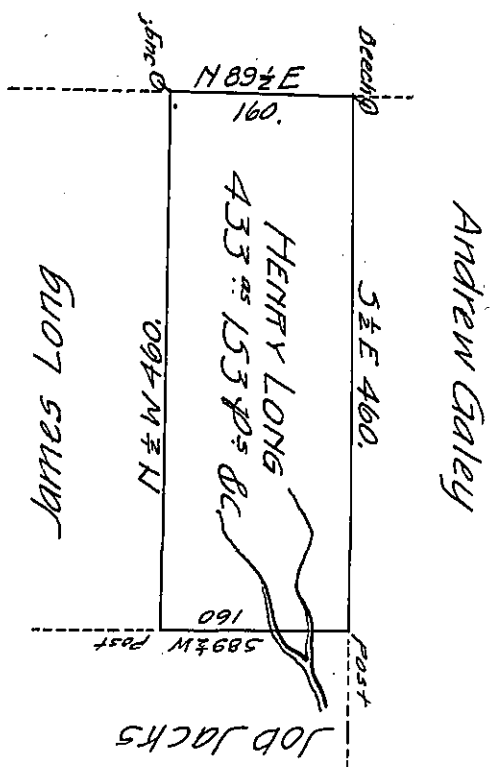


Jo^s Galely



A Draught of a tract of land called — Situate in the County of Luzerne, Adjoining Job Jacks & others, surveyed the 17th day of Novem^r 1792 for Henry Long in pursuance of a warrant bearing date the 3^d day of April 1792 Containing Four hundred Thirty three Acres, & one hundred & fifty three perches & the usual allowance of Six $\frac{1}{2}$ Cent for roads &c.

Ant^y Crothers D. S.

To Dan^l Brodhead Esq^r }
 Surveyor General }

IN TESTIMONY that the above is a copy of the original remaining on file in the Department of Internal Affairs of Pennsylvania, made conformably to an Act of Assembly approved the 16th day of February, 1833, I have hereunto set my Hand and caused the Seal of said Department to be affixed at Harrisburg, this twenty third day of August 1905.

James C. P. ...
 Secretary of Internal Affairs.